

Warwick Public Schools'

# Fall 2023 Data Update




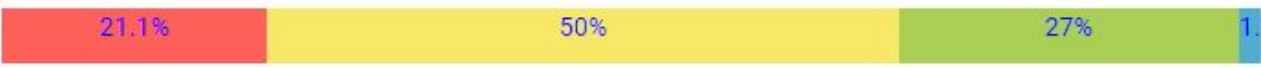




# K-8

## RICAS Scores



# ELA Scores - up 2% from last year K-8

|   | Name  | Students Tested |       | Performance   | Meeting or Exceeding Expectations | Average Scale Score |
|---|---|-----------------|-------|---|-----------------------------------|---------------------|
|   |   | #               | %     |   |                                   |                     |
|  | 2021-22 : Warwick : All Schools : All Grades : All Groups | 3625            | 99.2% |  | 28.9%                             | 487                 |
|  | 2022-23 : Warwick : All Schools : All Grades : All Groups | 3520            | 98.6% |  | 31%                               | 488                 |

## BRIGHT SPOTS

Oakland Beach - up 14% in ELA

Norwood - up 12% in ELA

Park - up 5% in ELA (Blue Ribbon School)

Wyman - up 17% in ELA

Robertson - up 4% in ELA

# Math Scores - up almost 5% from last year K-8

RICAS - Mathematics

Show Performance 
  Show Growth 
  View Results as Text 
 | [Export](#) | [Print](#)

|  | Name  | Students Tested |       | Performance | Meeting or Exceeding Expectations | Average Scale Score |
|--|---|-----------------|-------|-------------|-----------------------------------|---------------------|
|  |   | #               | %     |             |                                   |                     |
|  | 2021-22 : Warwick : All Schools : All Grades : All Groups | 3632            | 99.2% |             | 22.6%                             | 485                 |
|  | 2022-23 : Warwick : All Schools : All Grades : All Groups | 3532            | 98.6% |             | 27%                               | 488                 |

## BRIGHT SPOTS

Hoxsie - up 5% in Math

Greenwood - up 11% in Math

Holliman - up 7.5% in Math

Norwood - up 20.5% in Math

Winman - up 9% in Math

Wyman - up 10% in Math

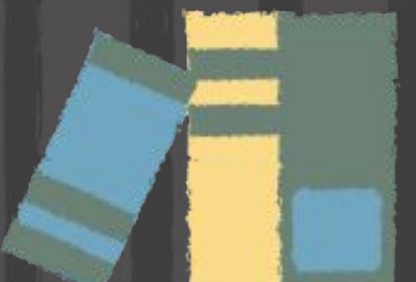
Park - up 8% in Math (Blue Ribbon School)

Robertson - up 3.5% in Math



**Higher iReady  
Scores in the  
spring are linked  
to an increase in  
scores on RICAS**





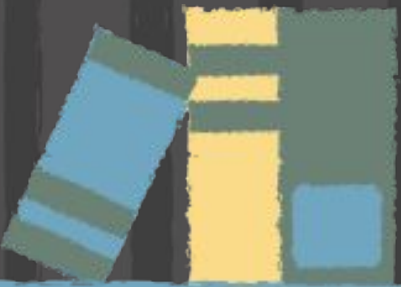
**- We had more fluctuations in ELA - can be attributed to a new curriculum K-5**

**- Math growth was strong overall**

**- We are holding data meetings to plan action steps with principals**

**- HS data is similar to last year, with an increase in PSAT math scores at Pilgrim (3.5%). ELA scores went down at Pilgrim by 7%. Scores at TG were flat across the board.**





- **Science testing (NGSA) will now count towards our accountability rating (district and school report cards)**
- **State scores decreased on the NGSA, from 30.9 to 30.4%**
- **Our scores increased from 29.1 to 29.6% - right under state average**
- **Piloting a new, high-quality science curriculum - stay tuned!**



# What about subgroups?

**In ELA:**

**When you break it down into subgroups, students who are economically disadvantaged grew 2%, in line with our average. Multi-lingual learners (MLLs) scores increased by 2.5%, slightly more than average. Data was not released in 21-22 to make a comparison for students with disabilities. Asian students' scores fell by 2%. Black/African American student scores are up 1%. Hispanic/Latino student scores are up 2%. Students with a background of two or more races are up 3%. White student scores are up 2.5%.**



# What about subgroups?

## **In Math:**

**Students who are economically disadvantaged went up by 4%, slightly under our district average. Our MLL population went up by 7.5%, much higher than average. Asian students are up 1%, Black/African American students are up 3.5%, Hispanic/Latino students are up 6%, students with a background of two or more races are up over 5%, and White students are up 5.5%.**

Thank  
you!

\*\*Check out the data yourself at  
<https://www3.ride.ri.gov/ADP>

